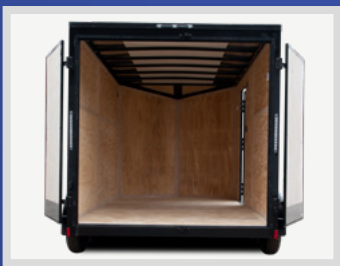




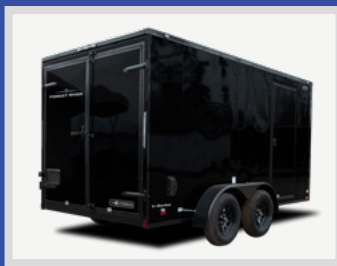
CARGO



4' - 5' WIDE

Need something easy to tow with a smaller vehicle? The V-Series offers lightweight and versatile options in both 4' & 5' wide models

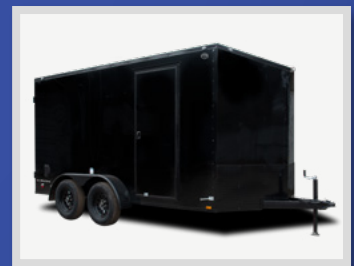
6' - 14' : **2100 - 1350**
BOX LENGTHS : **LBS PAYLOAD ***



6' WIDE

Looking for extra space while still maintaining easy visibility around your trailer? Our 6' wide V-Series models are the perfect balance of capacity and convenience.

8' - 16' : **1690 - 5400**
BOX LENGTHS : **LBS PAYLOAD ***



7 - 7.5' WIDE

Built to handle a wide range of hauling needs, our 7' and 7.5' wide V-Series trailers are ready for the job. From small equipment to lawn mowers to UTVs, this series has you covered.

10' - 24' : **1900 - 5150**
BOX LENGTHS : **LBS PAYLOAD ***

*Payload based off of base model builds



FOREST RIVER

FORESTRIVERINC.COM

	VHW46SA	VHW48SA	VHW58SA	VHW510SA	VHW610SA	VHW612SA	VHW612TA2	VHW712SA	VHW712TA2	VHW714TA2	VHW716TA2
GVWR	2000	2000	2990	2990	2990	2990	7000	3500	7000	7000	7000
Payload Capacity	1420	1350	2100	1890	1790	1690	5400	1900	5450	5050	4900
Exterior Length	9'6"	11'6"	11'10"	13'10"	13'10"	15'10"	15'10"	15'10"	15'10"	17'10"	19'10"
Exterior Width	5'11"	5'11"	6'10"	6'10"	7'10"	7'10"	7'10"	8'6"	8'6"	8'6"	8'6"
Exterior Height	5'6"	5'6"	6'6"	6'6"	7'6"	7'6"	8'1"	8'0"	8'0"	8'0"	8'0"
Interior Length	7'1"	9'1"	9'2"	11'2"	11'2"	13'2"	13'2"	13'1"	13'1"	15'1"	17'1"
Interior Width	3'8"	3'8"	4'8"	4'8"	5'8"	5'8"	5'8"	6'8"	6'8"	6'8"	6'8"
Interior Height	3'11"	3'11"	5'0"	5'0"	6'0"	6'0"	6'0"	6'0"	6'0"	6'0"	6'0"
Rear Door Type	Single	Single	Single	Single	Ramp	Ramp	Ramp	Ramp	Ramp	Ramp	Ramp
Rear Door Width	3'6"	3'6"	4'5"	4'5"	5'4"	5'4"	5'4"	6'5"	6'5"	6'5"	6'5"
Rear Door Height	3'7"	3'7"	4'9"	4'9"	5'8"	5'8"	5'8"	5'9"	5'9"	5'9"	5'9"
Coupler Size	2"	2"	2"	2"	2"	2"	2-5/16"	2-5/16"	2-5/16"	2-5/16"	2-5/16"
Curb Weight	580	650	890	1100	1200	1300	1600	1600	1850	1950	2100
Hitch Weight	58	65	90	110	120	140	160	160	185	200	215
Hitch Height	15"	15"	15"	15"	16"	16"	17"	18"	18"	18"	18"
Platform Height	17"	17"	17"	17"	17"	17"	18"	19"	19"	19"	19"
Axle	1-2,000	1-2,000	1-2,990	1-2,990	1-2,990	1-2,990	2-3,500	1-3,500	2-3,500	2-3,500	2-3,500
Suspension	Spring	Spring	Spring	Spring	Spring	Spring	Spring	Spring	Spring	Spring	Spring
Brakes	Optional	Optional	Optional	Optional	Optional	Optional	Optional	Electric	Electric	Electric	Electric
Tires	ST175/80R13	ST175/80R13	ST205/75R15	ST205/75R15	ST205/75R15	ST205/75R15	ST205/75R15	ST205/75R15	ST205/75R15	ST205/75R15	ST205/75R15
Wheels	5 Bolt	5 Bolt	5 Bolt	5 Bolt	5 Bolt	5 Bolt	5 Bolt	5 Bolt	5 Bolt	5 Bolt	5 Bolt
Main Frame	3" Tube	3" Tube	3" Tube	3" Tube	3" Tube	3" Tube	4" Tube	4" Tube	4" Tube	4" Tube	4" Tube
Floors	3/4"	3/4"	3/4"	3/4"	3/4"	3/4"	3/4"	3/4"	3/4"	3/4"	3/4"
Walls	3/8"	3/8"	3/8"	3/8"	3/8"	3/8"	3/8"	3/8"	3/8"	3/8"	3/8"



CARGO

1280 Commerce Dr / Bristol, IN 46507 / (574) 848-1335

[f](#) [v](#) [i](#) [c](#) [o](#) [n](#) [t](#) [i](#) [n](#) [e](#) [n](#) [t](#) [i](#) [a](#) [l](#) [c](#) [a](#) [r](#) [g](#) [o](#) [t](#) [r](#) [a](#) [i](#) [l](#) [e](#) [r](#) [c](#) [o](#) [m](#)

Continental Cargo's "V-Series" enclosed trailer lineup delivers a wide range of sizes, options, and packages to fit your hauling needs. These models are available in widths of 4', 5', 6', 7', and 7.5', with lengths spanning from 6' up to 24'. The "V-Series" comes equipped with a strong set of standard features that many others treat as upgrades, but we include them as essentials to ensure a better overall build.



VISIT OUR WEBSITE
FOR FULL FEATURES
AND SPECIFICATIONS

STANDARDS

- 4', 5', 6' Wide Models Standard With 18" V-Nose (Sloped)
- 7', 7.5', 8.5' Wide Models Standard With 24" V-Nose (Sloped)
- 32" C/S Door on 6', 7', 7.5' Wide Models
- 36"C/S Door on 8.5' Wide Models
- Semi-Style Camlock Door Latch
- Door Hold-Back on Rear Door
- Leaf-Spring Axle
- E-Z Lube Hubs
- Silver Powder Coated Wheels
- Radial Tires
- Aluminum Top Rails
- 24" ATP Stoneguard
- (1) 12V LED Dome Light
- (2) Flow Thru Sidewall Vents Standard On All Models
- Aluminum Exterior Fenders
- Clear Lens LED Clearance Lights
- Clear Lens LED Strip Tail Lights
- Clear Lens LED Strip Tail Lights
- DOT Lighting
- License Plate Holder With Light
- .030 Aluminum Exterior
- Rear Ramp Door With Flap Standard
- 16" OC Walls, Floor, Roof
- Black DTM Alkyd Enamel Coating
- Tongue Jack With Sand Pad
- Welded Safety Chains
- Full-Color Decals

PACKAGES

**AMER GUARD
PROTECTION**

**5' & 6' WIDE
VALUE**

7' WIDE VALUE

CARGO PLUS

BLACKOUT

CONTRACTOR

ROUND TOP

30 AMP ELECTRICAL

50 AMP ELECTRICAL



LEARN MORE:

Scan this QR code with your mobile device to learn more about Forest River.

